

# C.L Hoover Opera House

## Technical Portfolio

### General Information

6/11

**Address:** C.L. Hoover Opera House  
135 W. 7<sup>th</sup> Street  
Junction City, Kansas 66441

**Staff:** Mary Louise Stahl, Exec. Director *phone* (785) 238-3103 ext 331  
[mlstahl@jcks.com](mailto:mlstahl@jcks.com) (785) 209-1265 (cell)  
Technical Coordinator (785) 238-3103 ext. 332  
[ohtech@jcks.com](mailto:ohtech@jcks.com)

**Time Zone:** Central Standard:

**Lodging:**

<u>Holiday Inn Express</u> 120 N. East Street Junction City, KS 66441 (785) 762-4200 <a href="http://www.hiexpress.com/">www.hiexpress.com/</a>	<u>Courtyard Marriott</u> 310 Hammons Drive. Junction City, KS 66441 (785) 210-1500 <a href="http://www.junctioncitycourtyard.com">www.junctioncitycourtyard.com</a>	<u>Candlewood Suites</u> 100 S. Hammons Junction City, KS 66441 (785) 238-1454
<u>Quality Inn</u> 303 E Chestnut Street Junction City, KS 66441 (785) 784-5106	<u>Ramada Limited</u> 1133 S Washington Junction City, KS 66441 (785) 238-1141 <a href="http://www.ramada.com">www.ramada.com</a>	<u>Motel 6</u> 1931 Lacy Drive Junction City, KS 66441 (785) 762-2215

**Taxi:** ABC Union Cab Company (785) 238-6122  
Bell Taxi Transportation Inc. (785) 238-6161

**Airports:** Manhattan Regional Airport 11.32 Miles  
Wichita Mid Continent Airport 103 Miles  
Kansas City International Airport 136 Miles

## General Information

6/11

### Restaurants:

**Kite's Bar and Grill**

602 N Washington

**Cracker Barrel**

115 N East Street

**El Tapattio (Mexican)**

322 W 6<sup>th</sup> Street

**Quiznos Sub**

404 W. 6<sup>th</sup> Street

**Subway**

306 W. 6<sup>th</sup> Street

**Sirloin Stockade**

426 Golden Belt Blvd.

**Peking Chinese**

836 S. Washington.

**Napoli's Italian**

1032 S. Washington

**Pizza Hut**

407 Washington Street

***Wendy's, McDonald's, Freddy's  
Burger King, Taco Bell, Arby's***

**Laundry:**

*(drop-off  
and  
self-service)*

Laundry Land

1324 N. Washington St.

Junction City, KS 66441

(785) 238-1604

Express Cleaner

930 W 6<sup>th</sup> Street.

Junction City, KS 66441

(785) 238-7219

**Emergency**

**Numbers:**

*(must dial 9  
to get  
off-campus line)*

911 for Fire, Police, Ambulance &amp; Rescue Squad

Geary County Hospital (785) 238-4131

1102 St Mary's Road

Junction City, KS 66441

**Travel**

**From North or South:** Take US 77 to US 18 (8<sup>th</sup> Street). Travel East on US 18, approximately 2 miles to Jefferson Street and turn Right on to Jefferson Street. Go one Block to 7<sup>th</sup> Street, and turn Left into the alley behind the Opera House.

**From East or West:** Take US I70 to Washington Street (exit 296). Go north on Washington Street approximately 2 miles to 6<sup>th</sup> street. Turning Left on 6<sup>th</sup> Street (left turn lane at stop light) and go one block to Jefferson Street and turn right (you need to be in the right lane). The Opera House is on your right and turn right into the alley (half block) behind the Opera House.

**Please note that trucks can not stay in alley they must be moved after unloading. One parking space is allowed by the Opera House west side.**

**Special**

**Needs**

Wheel Chair Space: The seating areas are: House right and House Left in front, the rear center of the first floor, Balcony Right and Left in the rear. All house seats are within range of an FM transmitter for the hearing challenged.

# CARPENTER

6/11

**Seating:** Total 423 Main Floor: 278 Balcony: 145

## Stage

<b>Dimensions</b>	Proscenium Width.....	36'-0"
	Proscenium Height.....	27'- 2"
	Plaster Line to Pit.....	6'- 5.5"
	Plaster Line to Pit Rail at Center.....	11'- 1"
	Plaster Line to U. S. Wall at Center.....	21'- 9"
	Center Line to S.R. Wall.....	30'- 6"
	Center Line to Pin Rail S.L. Wall.....	26'- 10"
	Orchestra Pit Depth @ Stage.....	9'- 8"
	Stage Height from House Floor.....	3'- 4"
	Stage Height & Row J Height.....	0'- 0"
	Grid Height.....	43'- 0"
	Low Trim.....	3'- 6"
	High Trim.....	39'-10"
	Batten Travel.....	36'- 4"
	Med Bridge Height.....	22'- 2"
	Loading Bridge Height.....	32'6"
	Proscenium to S.L. Wall.....	12'- 6"
	Proscenium to S.R. Wall.....	10'- 3"

**Floor** The floor is 1" Tongue and Groove Oak set over 3/4" plywood on a base of 2" x 4" sleepers setting on Concrete. Floor has a trap area 3 foot up from Plaster line running within 3 foot of each side of the proscenium. The trap area is 30 foot wide by 12 foot depth. The theater does not own a vinyl dance floor. With prior permission from the technical coordinator, 6d nails and deck screws may be used, and holes up to 1/2" may be drilled providing they are removed and plugged with hardwood dowels.  
Note: *Masking or Duct tape is not to be used on the stage floor.* Vinyl tape, gaffer's tape and cloth spike tape are acceptable if removed after the event.

### Stage Access

USL & USR: (2) 3' x 7' doorway to outside alley  
DSL 3' x 7' doorway to auditorium  
DSL 3' x 7' doorway to auditorium and dressing room  
USR: 8' x 14' doorway to scenery storage and outside alley  
USR: 3' x 7' doorway to crossover, scenery storage, and dressing rooms

### Orchestra Pit

SR to SL: 36' - 10"  
Depth: 9'- 8"  
DS to US: 7' - 8" with 1' - 0" additional under stage  
Access: Door S.R to stairs up to stage and dressing room corridor.

# CARPENTER

6/11

## Soft Goods

(See line plot for standard dress)

- Main Valance** Medium gray, Velour (1) 9'2" x 36', 75% fullness, Lined  
Dead Hang nailed to proscenium
- Main Curtain** Medium gray, Velour (2) 19' x 23'1", 75% fullness, Lined  
Manually operated as traveler from SL. or guillotine from S.L.
- House Drapery** All House Drapery is black velour 20 oz Flat
- Legs (3 pair) - 19' 0" H x 6' 0" W  
Side tab legs (1 pair) – (3 each) 19' 0" H x 4' 0" W
- Borders (3) - 8' 0" H x 44' 2" W
- Black out (1) 20' 0" H x 44' 2" W
- Scrim Black (1) 20' 0" H x 44' 2" W
- Cyclorama (1) - Natural muslin 20' 0" H x 44' 2" W

## Load-in

- Loading Dock** Located on the south side of the building at the southeast corner  
Loading Dock: Height: 2' - 0"  
Load in Door: High 14' x 8'  
The loading dock is serviced by street alley. **Please note that trucks can not stay in alley they must be moved after unloading. One parking space is allowed by the Opera House west side.**
- Load in door:** The loading dock services provide direct access storage area and stage level, backstage support area, and dressing rooms. Stage access is to the left of load in door.
- Parking** **Trucks can not stay in alley they must be moved after unloading. One parking space is allowed by the Opera House west side.** Additional parking is located at City parking lot 2 blocks away. A Bus or truck may park beside the Opera House on the West Side with permission from the Technical Coordinator.

Note: Unauthorized vehicles will be towed at the owner's expense

# **CARPENTER**

6/11

## Additional Information

**The Technical Coordinator and Junction City Fire Marshall must approve any and all use of pyrotechnics or open flame. In addition a permit for pyrotechnics, a demonstration of the effect will be required from the local fire marshal to determine the safety of the device and its use.**

**The use of fog / hazer needs to be approved by the Technical Coordinator (2) weeks before the event, plus a statement of use needs to be in the audience programs.**

# STANDARD LINE PLOT

6/11

LINE	STANDARD DRESS	DISTANCE FROM PLASTER LINE	DISTANCE FROM PREVIOUS BATTON
A	Valance	0'4"	0'8"
1	Main Curtain *	0'-8"	1'2"
2	Projection Screen	1'-4"	0'- 8"
3	open	2'-0"	0'-8"
4	First Electric	2'8"	0'-8"
5	Open	3'-4"	0'-8"
6	Open	4'-0"	0'-8"
7	1 <sup>st</sup> border	4'-8"	0'-8"
8	1 <sup>st</sup> Leg	6'-0"	1'-4"
9	Second Electric	6'-8"	0'-8"
10	Open	7'-4"	0'-8"
11	Open	8'-0"	0'-8"
12	Open	8'-8"	0'-8"
13	2 <sup>nd</sup> Border	9'-4"	0'-8"
14	Black out drop	10'-0"	0'-8"
15	2 <sup>nd</sup> Legs	10-8"	0'-8"
16	Third Electric	11'-4"	0'-8"
17	Open	12'-0"	0'-8"
18	Open	12-8"	0'-8"
19	3 <sup>rd</sup> Border	14'-0"	1'-4"
20	3rd Legs	14'-8"	0'-8"
21	Open	15'-4"	0'-8"
22	Fourth Electric	16'-0"	0'-8"
23	Open	16'-8"	0'-8"
24	Open	17'-4"	0'-8"
25	Skycloth (cyc)	18'-0"	0'-8"
Side curtain track stage right running upstage to down		2' off stage of battens	
Side curtain track stage Left running upstage to down		2' off stage of battens	

\* Will not be removed

Arbors weight limit---850 pounds

# ELECTRICAL

6/11

- Light Booth:** Located back-of-house approx. 65' from the plaster line above the balcony.
- Power:**  
400 Amp 3 Phase, 120/208V disconnect on the USR wall for touring company use.  
100 Amp 3 Phase 120/208 V disconnect on DSR wall for touring company use  
60 amp shore power southwest corner of alley area.  
*Note: Facility does not have a spare cable to run to bus.*
- Dimmers:** 192 2.4 KW EDI SPI Dimmers dedicated to performance lighting. DMX
- Control:** Main console: **ETC Expression with Emphasis w/ 3 LCD** monitors and WRFU Wireless Remote Focus Unit
- House Lights:** Unison controls located backstage, lighting booth and lighting console. Step lights and exit lights must remain on during performance.  
*Note: Extra crew is needed if house lights are to be dimmed from back stage.*
- Cable:**  
30 – 6 Foot three pin cable  
20 – 12 Foot three pin cable  
20 – 25 Foot three pin cable  
18 – 3 Foot twofers
- Trees:** 6- 10' 0" trees. 20 – 12" side arms are available
- Circuits:** 192 ETC 2.4 dimmer per circuit (20 AMP grounded stage pin)
- FOH Positions:**  
FOH  
Catwalk 2  
33' 0" from the proscenium, 42' 0" throw is approximately at 45% angle.  
Catwalk 1  
19' 0" from the proscenium, 33' 0" throw is approximately at 55% angle  
  
FOH  
Balcony Rail  
33' 0" from the proscenium, throw is approximately 34' 0" at 25% angle
- Side ports:** Side ports bars per side running along the opera boxes throw is approximately 34' 0" at 45% angle  
Excellent side lighting position.  
Stage Left and Stage Right proscenium wall
- Spot booth:** .Approximately 65' from proscenium. Both positions are in the lighting /sound booth

# ELECTRICAL

6/11

- Stage Positions:** (all battons are 44'2" in length)  
1st Elec. 2'8" from plaster line  
2nd Elec. 6'8" from plaster line  
3rd Elec. 11'4" from plaster line  
4<sup>th</sup> Elec. 16'0"
- Onstage Rail Boxes:** (Boxes are located catwalk rail onstage 25' SL & SR of center line.)  
Box 1 & 2 3'6" from plaster line  
Box 3 & 4 9'0" from plaster line  
Box 5 & 6 14'6" from plaster line

**Instruments:** Arrangements must be made in advance for rental and installation.

- 12 19° Source 4
- 24 26° Source 4
- 24 36° Source 4
- 12 50° Source 4
- 24 Source 4 PARs
- 18 Altman 75Q Fresnels
- 04 Altman ZS-4 Strip light hanging
- 04 Altman ZS-4 Strip light floor mounted
- 12 Source Four Gobo Holder
- 12 Source 4 top hats
- 06 Source 4 half hats
- 06 Source 4 Donuts
- 02 Source 4 drop-in Iris
- 12 Altman 8" Fresnels 4 leaf barndoors

**Follow Spot:** Spots are located in the Light / sound booth. At this time there are no followspots.  
*Note: Follow Spots cannot be transported to other locations.*

**Accessories:** 12' H x 21' 4" W cinema screen located up-stage 1' - 4" from plaster line.  
*Note: Cannot be removed.*

1-30' Genie electric vertical lift, 1- 12', 2- 8' ladder

# ELECTRICAL

6/11

## Circuiting

**Circuit Chart:** (HR to HL, SL to SR, unless noted)

Front of House		
Catwalk 1		01-28
Catwalk 2		29-52
SL Proscenium		53-58
SR Proscenium		59-64
HR Balcony Side Bar		65-68
HL Gallery Side Bar		69-72
House Balcony		73-82
First Electric		83-100,
Second Electric		101-118,
Third Electric		119-136,
Fourth Electric		137-111
SL Rail Boxes	1-DS	149-154
Pin rail	2-CS	161-166
	3-US	173-178
SR Drop Boxes	1-DS	155-160
Pin rail	2-CS	167-172
	3-US	179-184
SL Rear		185-188
Trap area under stage		189-192

# SOUND

6/11

- Sound Booth:** Back-of-house above the balcony approximately 65 feet from the plaster line.
- House Mix:** Center of House under the balcony permission is needed two weeks in advance.
- Power:** DSR wall 100 Amp Disconnect 120/208 V, 3 Phase
- Main Console:** Midas Verona 480 48 ch.
- Speaker Cluster:** Permanently mounted House right, left, center  
3 set of 2 EV XI-1152A R-C-L  
2 EAW MQ1215 Sub-Woofer R-L
- Fill Speakers:** 4 Meyer/ MM4 front fill speakers
- Monitor Speakers:** 6 EAW SM200ih floor monitors
- Outboard Processors:** 6 - DBX /166XL, 2- channel compressor /limiter  
4 - DBX/1231 dual 31- band graphic equalizer
- Power Sequencing :** Lowell SCS – 8 step  
Lowell RPC-1-IG-MC Remote Power Module
- System Signal Processor:** 3 - BBS Sw-9088iis  
Biamp/Select 8 preset selector
- Amplifiers:** 9 QSC / CX-702 High / Mids / Fills  
2 QSC / CX-902 Sub type B  
1 QSC / CX602V  
2 QSC / CX404  
1 QSC / CX302
- Production intercom; Clearcom/ MS440** 4 – channel intercom station

# SOUND

6/11

<b>Microphones:</b>	4 – Crown PCC -160A 8 - Shure/ SM87A Dynamic Microphone 4 - Shure/ SM57A Dynamic Microphone 4 - Shure/ SM81 Dynamic Microphone 3 - Audio-Technica / AT871R PZM microphone 8 - Shure / ULXP124/85 wireless Lavalier Whirlwind / Director passive direct box 12 - Ultimate MC-40 Tripod, boom mic stands 4 – Ultimate MC-97 straight mic stand  Assorted microphone cables, adapters
<b>Playback:</b>	1 Tascam CC222MKIII Dual disc CD player
<b>Mic Lines:</b>	(mic. level XLR, terminates at main console patch panel)
SL Proscenium	1-12
SR Proscenium	13-24
SL Orchestra Pit	25-36
<b>Headsets Stations:</b>	1 - Stage right A&B 2 - Stage left A&B 4 - Projection booth A&B 1 - Master light booth A, B, C, D 1 - Dressing room (men, women) C 1 - Trap Room A&B 1 - Orchestra Pit A&B 2 - Costume Shop C 2 - Catwalks A&B 1 - Each Lobby, Rehearsal Hall, Scene Shop, Box Office, D
<b>Hearing Assist:</b>	Listen /LS -04-072 kit
<b>Paging System:</b>	<b>Clear Com</b>

# Properties

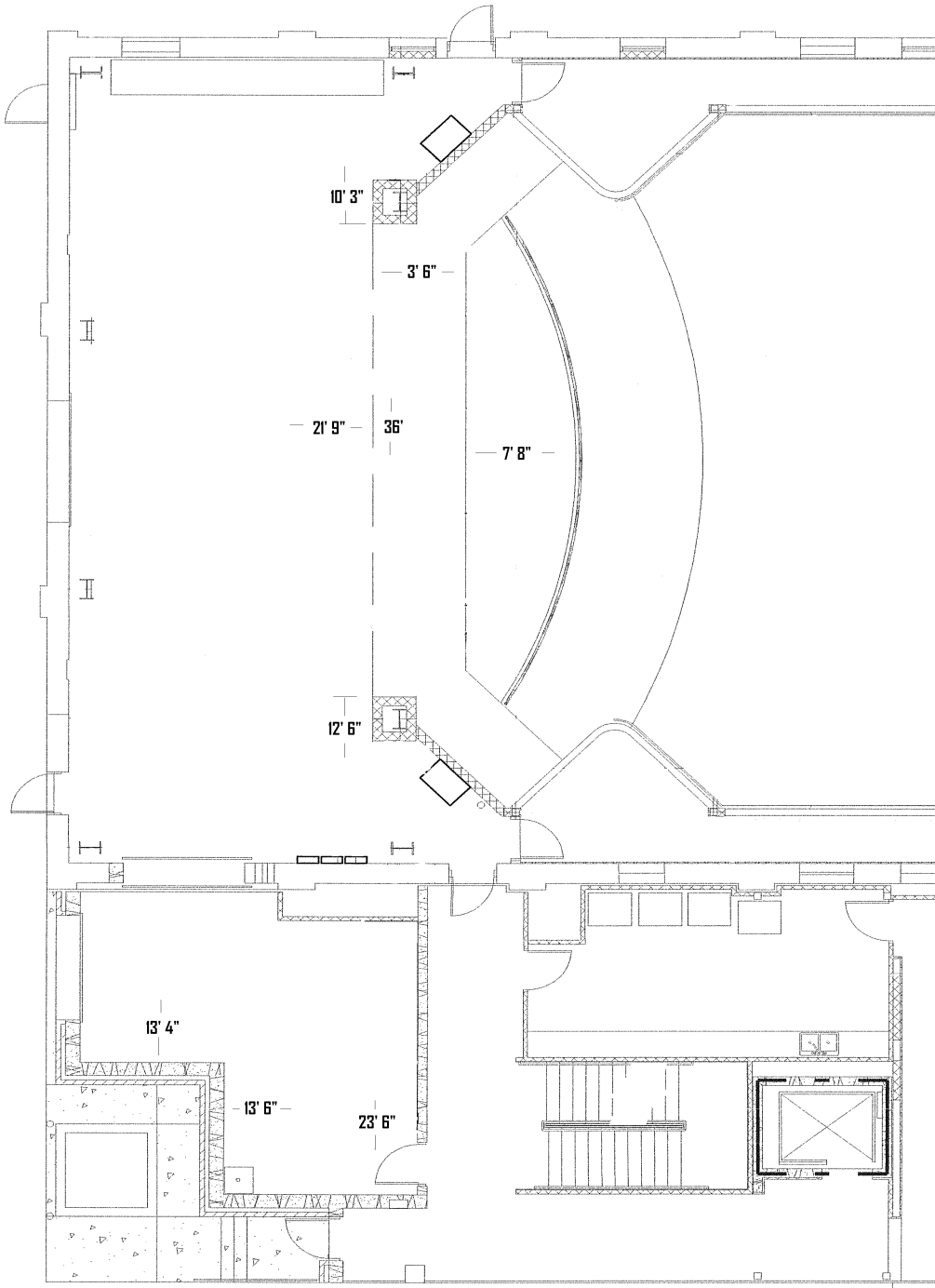
6/11

- Storage:** There is limited storage in the loading dock area or storage on the stage area. At times trucks will be needed for additional storage
- Equipment:** 24 - Music Stand with NO Music Stand Lights  
Green colored Chairs are available  
6 - 6' Tables  
3 - Rolling coat racks and installed dressing room racks
- Orchestra Shell** There is not an Orchestra Shell
- Platform Riser** There are not platform risers
- Choir Risers** 3 step Choir riser may be provide on advance request.
- Pianos** (2) Electric pianos are available on request.

## **Production and Support Areas**

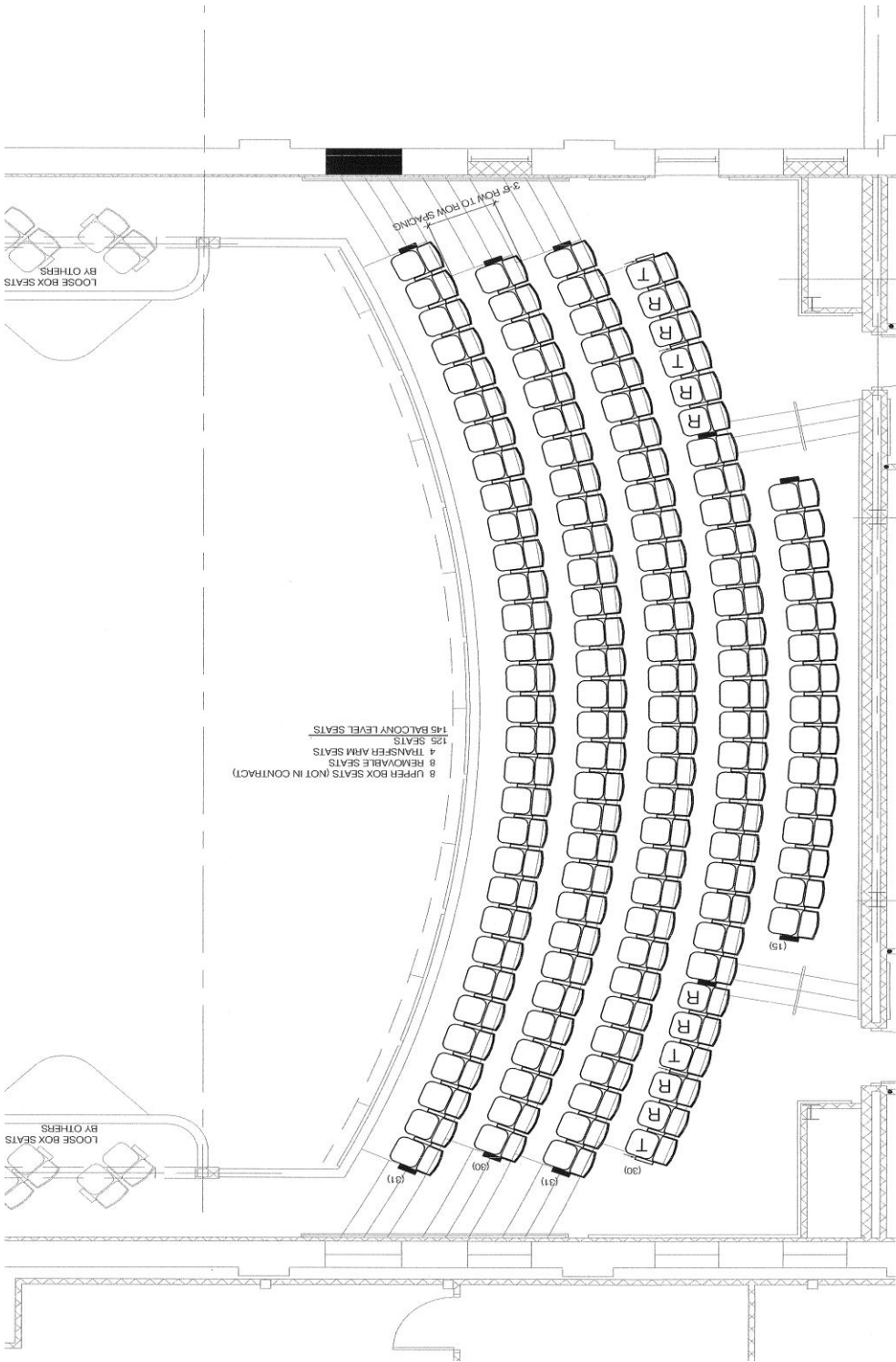
6/11

- Dressing Rooms:** Chorus 1- 22' W x 10' D there is a restroom, but no showers.  
Chorus 2 - 22' W x 10' D there is a restroom, but no showers.
- Laundry:** Located in Second Floor Level area there is one washer and one dryer.
- Green Room:** There is no Green Room
- Production Office:** There is no Production Office.
- Crossover:** Crossover is via a 2' between the wall and Skycloth.
- Handicap Access:** All areas backstage are handicap accessible from the lobby and the stage. All entrances to the building are handicap accessible except the loading dock.
- Building Entry:** A performance entry is located on the east side of the building at the south-east corner. These doors can remain locked during performance if requested. Security personal can be posted if requested in advance.

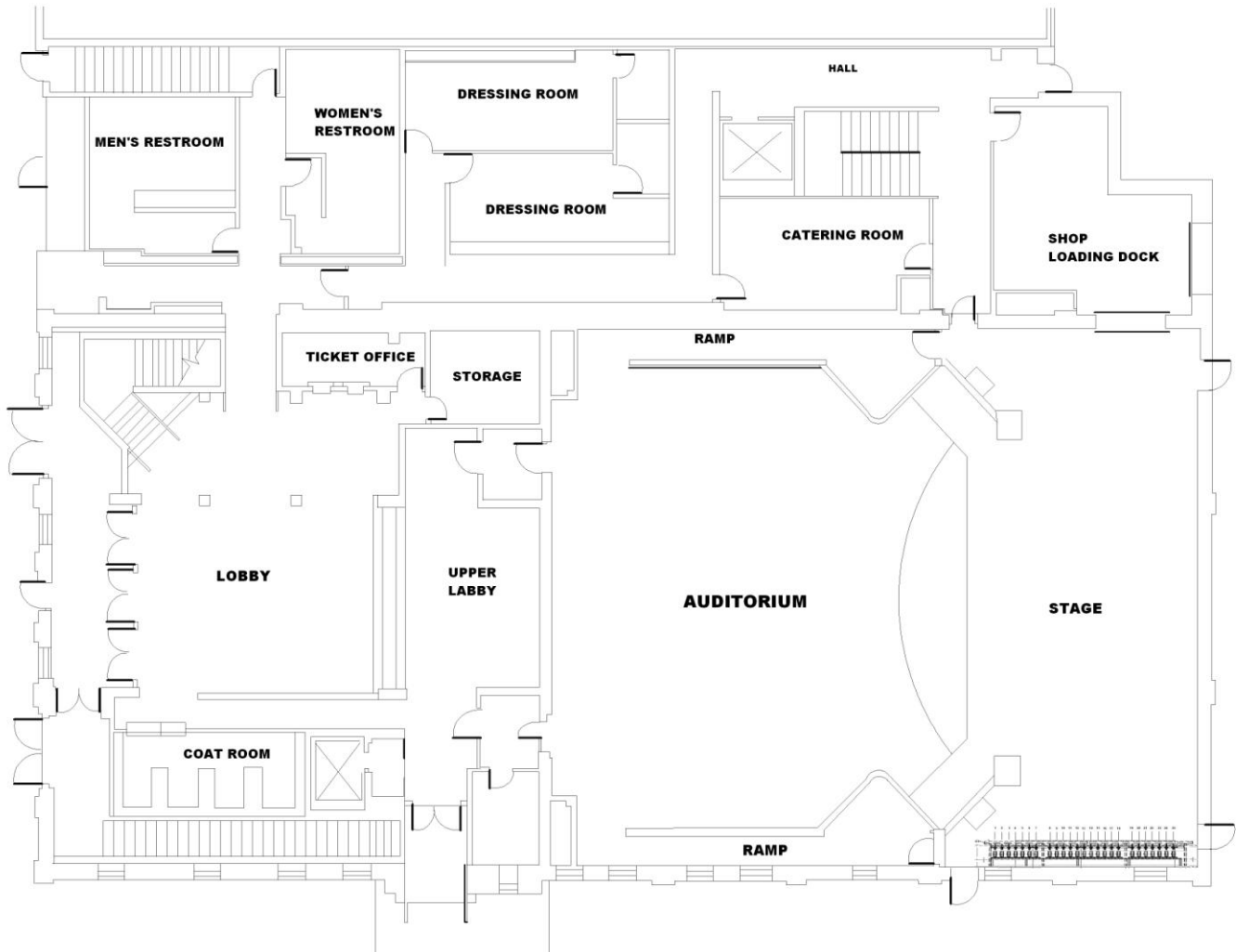


STAGE SIZE AND LOADING SHOP ENTRANCE





BALCONY SEATING



FIRST FLOOR PLAN WITH STAGE AND DRESSINGS